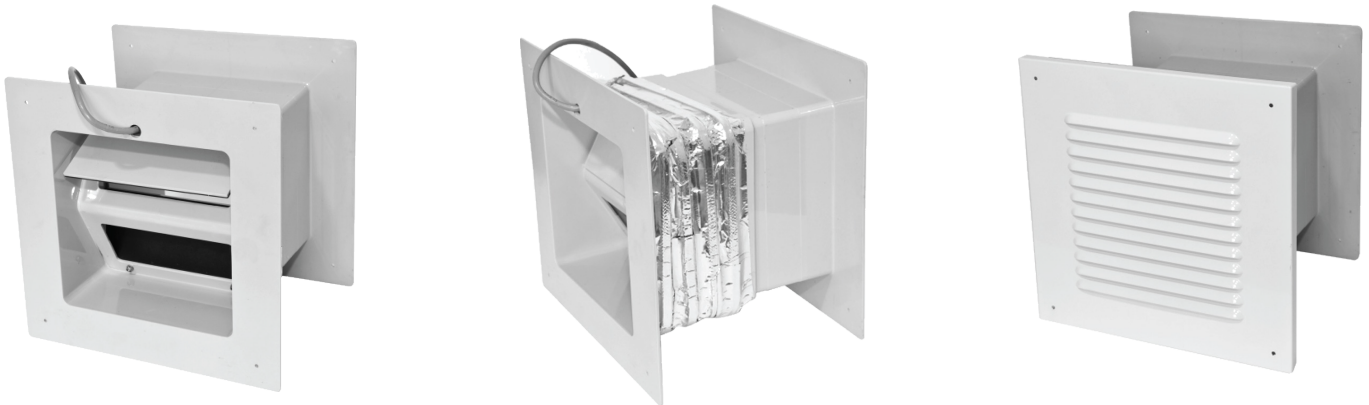


CRH-1000 Pressure Relief Valve

Installation Instructions



Operating Range To - 40°C

Ambient Temperatures may affect this result

IMPORTANT: The CRH-1000 Pressure Relief Valve only operates on a Vertical Plane.

Not suitable for Ceiling Installation.

Installation:

1. Choose the correct position for the valve(s).
2. Cut a square hole in the freezer wall. Cutout must have clearance for the heating element.
3. Remove the tapes that have held the flaps secure during transit.
4. Fit the valve body section (top indicated) to the wall, ensuring the flange face is sealed around the cutout with silicon beads and fix through the 2 holes in the centre line of the flange face. (Screws supplied). Ensure the body is level in both directions.
5. Electrical connection by a Registered Electrician. Connect the 240 volt supply and test the heater coil. (0.230 amps initial start)
6. Depending on the panel thickness, trim the rear flange section to length and fix to the wall through the 2 holes in the Centre of the flange. Again, ensuring the flange face is sealed around the cutout with silicone beads and is level.
7. Remove the valve flap fixing screw, before fitting grille.
8. Fit the protection grilles through the 4 mounting holes. Screws supplied.

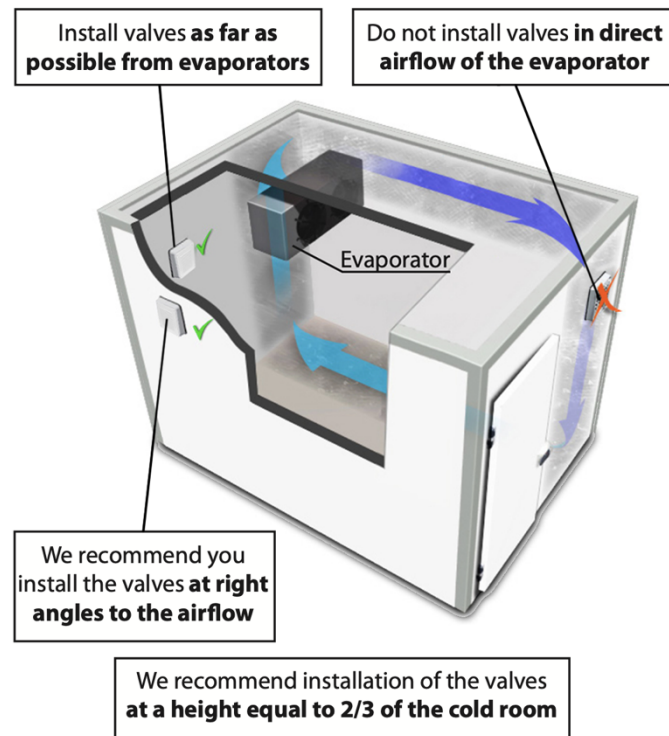
Important Notice

Heaters for Pressure Relief Valves/Ports and/or door frames must not be activated (switched on) before the room is brought down to designed operating temperature.

Initial Testing Excluded

To ensure correct operation of Valves:

Valves must not be installed in the direct airflow of the evaporator. We recommend installing valves at right angles to the airflow and as far away as possible from the evaporator. The optimal height for installation is a height equal to 2/3 of the room in an unobstructed location.



1. Install valves as far as possible from evaporators.
2. Do not install valves in direct airflow of the evaporator.
3. Valves must only be installed where there is adequate airflow volume available both sides of the valve.
4. Do not obstruct the valve grille.