

## Keeping it cool with CoolClad.

Enjoy temperature stability through the busiest seasons with coolstore access you can depend on.

### CoolClad Insulated Hinged Doors

Installed in a wide range of industries, from food manufacturing facilities, and commercial kitchens to medical spaces, pack houses, even arctic animal environments. We have the ability to configure access to suit your unique needs.

Our CoolClad Insulated Hinged Doors maintain consistent temperature of sensitive products while ensuring easy access for staff.



#### Key Features

Easy to clean with a smart fresh finish, where form combines with functionality. Lightweight yet hardwearing, we build to last.

The classic exterior hides a carefully developed design, made by the experts, to deliver high performance and longevity.

Used primarily as an internal door, yet able to adapt to suit external conditions if required. We listen and can curate to your individual needs.

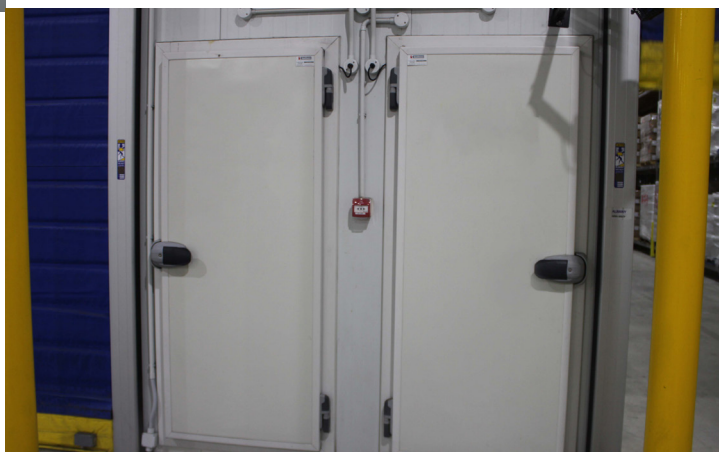
#### Product Information

##### Temperature Range

We can manufacture for either medium or low temp conditions. Our medium temperature doors will comfortably maintain between 0 and 9°C, and low temperature doors between 1 to -25°C.

##### Safety

Excellent safety measures are standard, with the ability to open the door from the inside, even if it is locked from the outside. The internal release latch is housed inside a plastic dome, illuminated by fluorescent EXIT markers. Your staff's safety is assured as you cannot be locked in.



# Tech Specs

## Acceptable Manufacturer

Door set shall be AceDoors "CoolClad" door as supplied by AceDoors Systems 2013 Ltd.

## Door Leaf

- A. 100mm thick door leaf
- B. Clad in 0.59 G2 Coloursteel with titania coloured powdercoated aluminium channels and frame.
- C. Door leaf injected with polyurethane PUR foam.
- D. Door leaves fitted with 2 rise and fall hinges with three-way adjustment for gasket alignment.
- E. Door leaf fitted with silicone gaskets.

## Door Frame

- A. 2mm thick aluminium powdercoated profile with hidden fixing bolts.
- B. Standard 3-sided frame with wiper gasket.
- C. Back flashing included.
- D. Low Temperature Model fitted with heating cable within frame.

## Hardware

- A. Fermod lockset made from composite material with hidden and tamper proof screws.

## Options

- A. Full surround frame
- B. S/S Kick Plates
- C. Heated sill
- D. Chequer Plates
- E. Effco Latchset
- F. Vision Panels, triple/double glazed
- G. Comac hinges

### Manufactured by AceDoors

**Auckland:** 43a Hobill Avenue, Wiri, Auckland P 0800 DOORS5

**Christchurch:** 12 Westland Place, Rolleston, Christchurch P 0800 DOORS1

**PO Box:** 76-105, Manukau, Auckland 2241, New Zealand, [www.acedoors.co.nz](http://www.acedoors.co.nz)

**AceDoors - over 35 years manufacturing experience. 24/7 repair service.**

